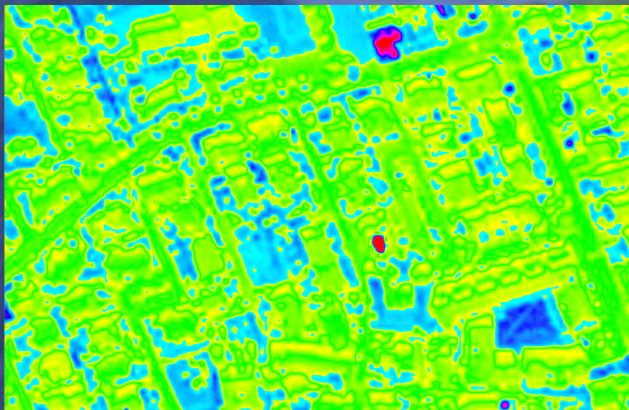


THE BENEFITS INTRODUCED WITH NEPTUNE

- Immediate water leaks map
- No extension limit (from 10 to thousands km²)
- High speed response time (3 weeks)
- High resolution point identification (5 meters)
- Non-invasive technology not harmful to environment
- No discomfort to end users
- Reduction of costs, risks, manpower needed to research and repair the underground pipes
- Reduction of costs for maintenance, process, reagents, power supply, etc.
- Reduction of rates for water supply to utilities
- Short PayBack period
- Zero bureaucracy
- Radar technology works 24h/365d in any weather conditions.
- Payment based on water leaks found

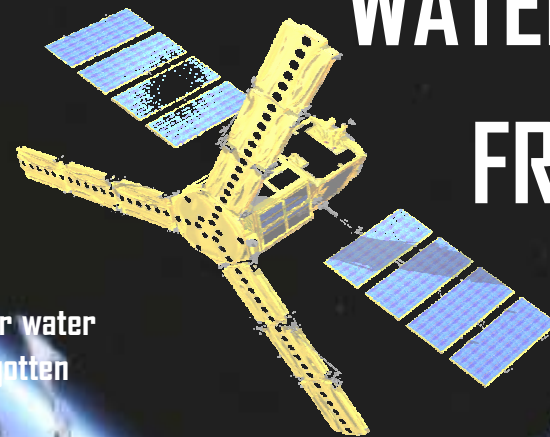


Other ideas we are developing:

Neptune Water Sources: to find water sources especially in mountain areas.

Neptune Structures Finder: to discover water facilities and structures hidden or forgotten

WATER LEAKS FROM SPACE?



Neptune Water Leaks Sat

Via Filippo Corridoni, 73
04100 - Latina
Italy

+39 0773 690.980

info@NeptuneWaterLeaks.com

images courtesy of NASA, ESA, CSA, Google Earth

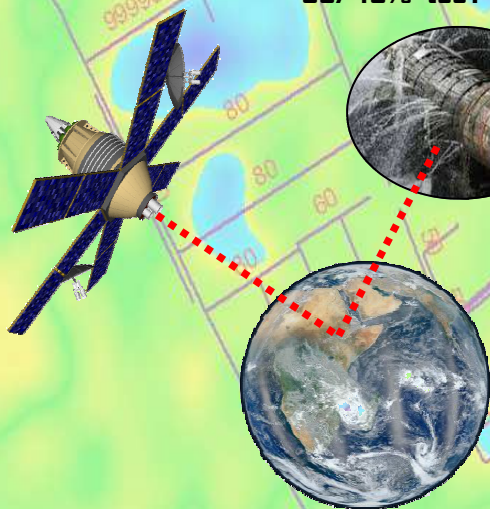


WATER LEAKS: A WORLDWIDE PROBLEM

The biggest problem of worldwide water treatment operators is the huge amount of water lost in the distribution network in the subsurface. With an average loss of about 40% caused by the aging of pipelines, and especially from the difficulty of the research, every year there are billions cubic meters of processed and dispersed water into the ground before it reaching households and industries which it is destined.

It's a growing problem since this is a vital resource and the economic expenditure has a heavy impact on the financial statements of a company or a city hall.

Does your system have water leaks of 35/40% too?



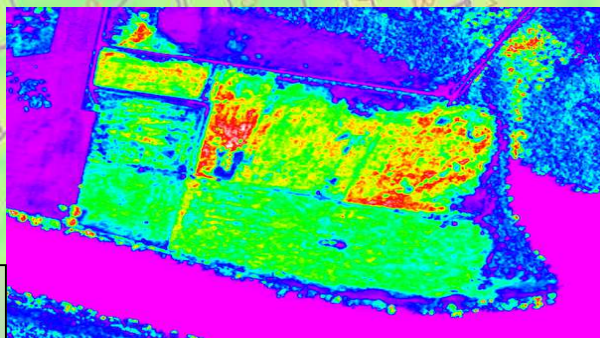
12°25'30,05"E
44°47'53,18"N
via Angelo Incao
5 l/sec
18 mc/h
432 mc/d
157680 mc/y

12°25'32,96"E
44°47'46,27"N
via Albert Einstein
7,20 l/sec
25,92 mc/h
622 mc/day
227059 mc/year

NEPTUNE: THE SPACE SATELLITE SOLUTION TO FIND WATER LEAKS

NEPTUNE Water Leaks Sat, is the innovative and revolutionary service to trace the losses of drinking and industrial water present in the subsoil through the use of satellites data provided by NASA and European Space Agency.

The benefits of this technology are the great area extension that can be photographed, the high precision research and the high response speed.



Subsoil data analysis example

12°35'42,19"E
44°49'51,75"N
via Busovecchio
1,30 l/sec
4,68 mc/h
112,32 mc/day
40996 mc/year

12°55'46,55"E
44°45'49,36"N
via P. Longo
4,3 l/sec
15,48 mc/h
371 mc/d
135604 mc/y

NEPTUNE, through satellite data processing, detects and identifies the water leaks present in the subsurface distribution network, with a non-invasive method, without need to cause troubles to the end user (temporary closing of the distribution of water) typical of standard systems.

HOW DOES NEPTUNE WORK?

Neptune uses the features of ground penetration of SAR technology where satellites continuously transmit radar waves to Earth. The return frequency is influenced by the type of material affected and we search the correct values for your soil type (ferrous, calcareous, rocky, etc.)

When you'll decide to try Neptune, we'll perform a download of a multi-temporal data sequence of the area you want to monitor. Then we will analyze these data looking for broken pipes in the distribution network which you provided us the GIS map.

At the end you will have a report, similar to the background image of this flyer, showing the exact points where there are water leaks and their extension.

Do you want to try Neptune or still continue to have losses of 35/40% in your distribution network? See benefits on the next page...



11°45'57,37" Satellite constellation covers entire world